



Longmire Road Retail

5.93 Acres | Conroe, Texas



Property Highlights & Demographics

5.93 Acres / Conroe, Texas



Property Highlights

- ± 1,500 feet of frontage along Longmire Road providing excellent visibility
- Property is situated in close proximity to FM 3083 and Hwy 105 providing easy access to I-45 and Downtown Conroe.
- Surrounded by multiple master planned communities.
- Conroe was the 9th fastest growing city in the United States from 2010 to 2019, and has a 15% expected growth rate over the next five years.
- Build-to-suit, for sale or lease.

	3 Miles	5 Miles	10 Miles
Total Population	68,378	93,629	267,887
Total Households	23,638	32,532	95,661
Average HHI	\$72,266	\$81,454	\$105,686

 110,898 Vehicles Per Day	 30,198 Vehicles Per Day	 25,200 Vehicles Per Day	 15,856 Vehicles Per Day
--	---	---	---

Source: TxDOT AADT Annuals

Area Amenities & Surrounding Communities

5.93 Acres / Conroe, Texas



Build to Suit

5.93 Acres / Conroe, Texas



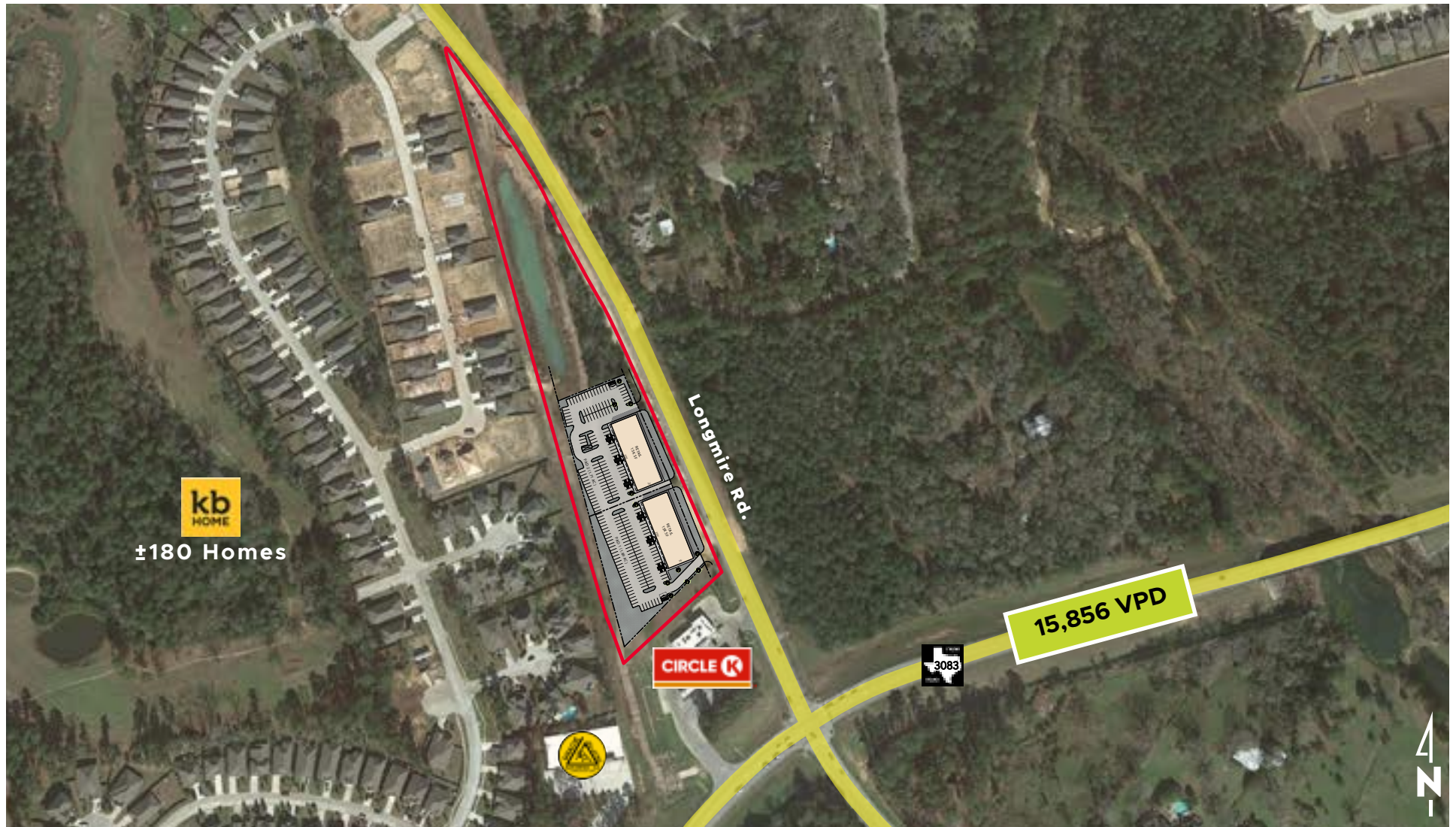
Surrounding Area Retail

5.93 Acres / Conroe, Texas



Site Plan Option

5.93 Acres / Conroe, Texas



James Todd

Commercial Development Associate

jtodd@signorellicompany.com

w: 713.452.1736



1401 Woodlands Parkway | The Woodlands, Texas 77380

SIGNORELLICOMPANY.COM